

Investment in Child Care and Pre-K Pays Big Dividends



The Early Learning Coalition of the Big Bend Region

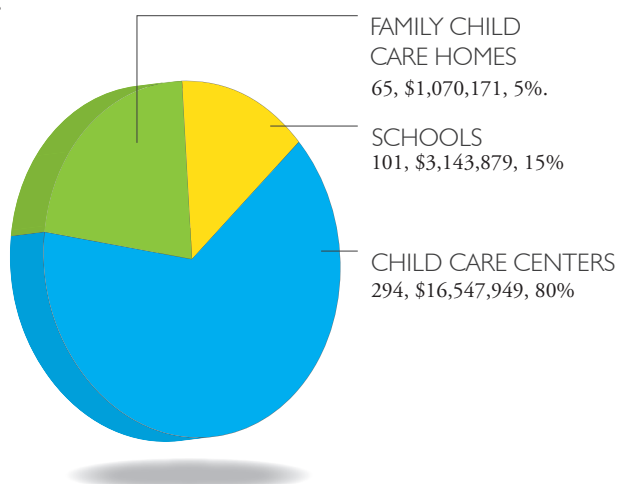
The Early Learning Coalition of the Big Bend Region (ELC) is a private, not-for-profit organization that provides services to families, children and child care providers in Gadsden, Jefferson, Leon, Liberty, Madison, Taylor and Wakulla counties. By linking families to child care and pre-K services, the ELC supports parents' ability to work and helps prepare children for success in school.

In the Big Bend region, **\$28 million** in federal and state dollars, community support and parent fees are invested to provide child care and pre-K services to **7,052 children**.

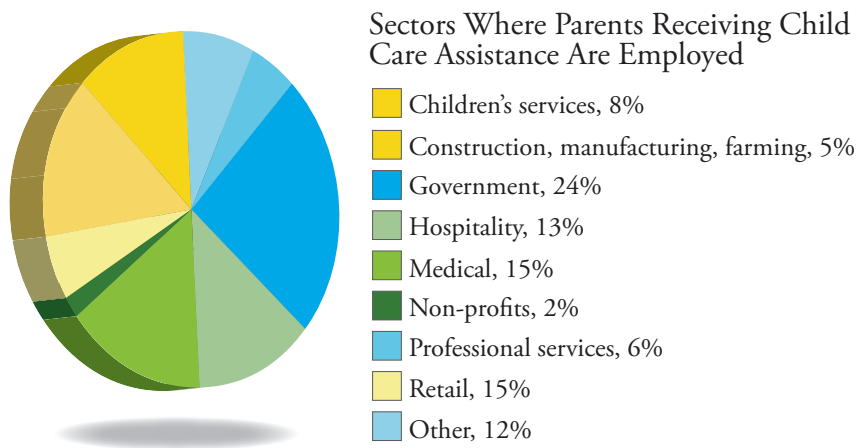
That investment pays big dividends in the form of...

JOBS

Through that investment, **2,118 workers are directly employed** in family child care homes, child care centers and schools.

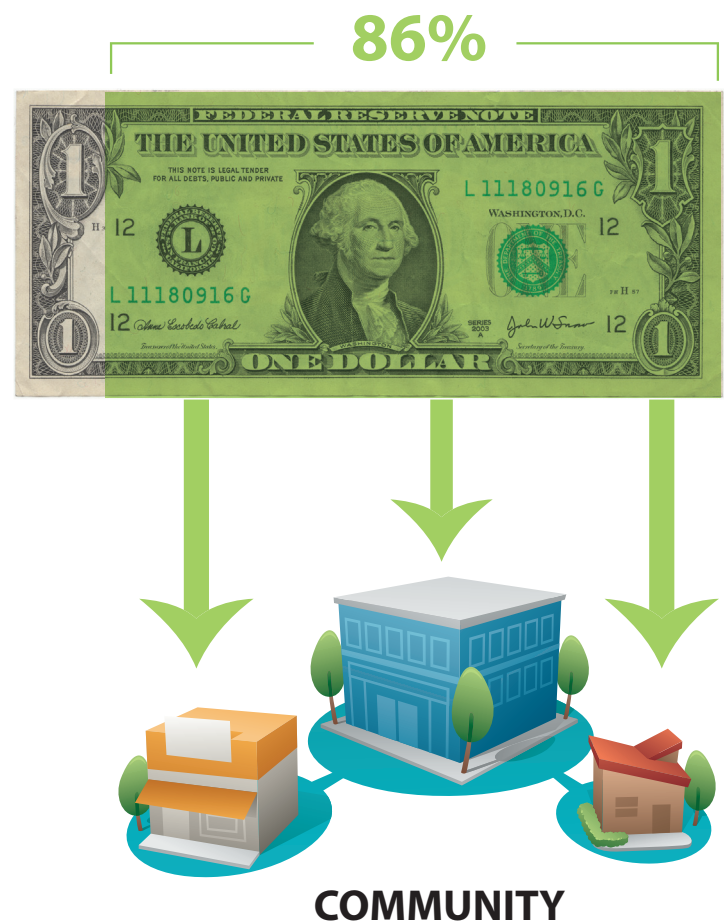


Because of that investment, **5,077 local residents are able to work**, knowing their children are cared for. The average family income for a family of three receiving child care and pre-K services is \$18,362.



ECONOMIC ACTIVITY

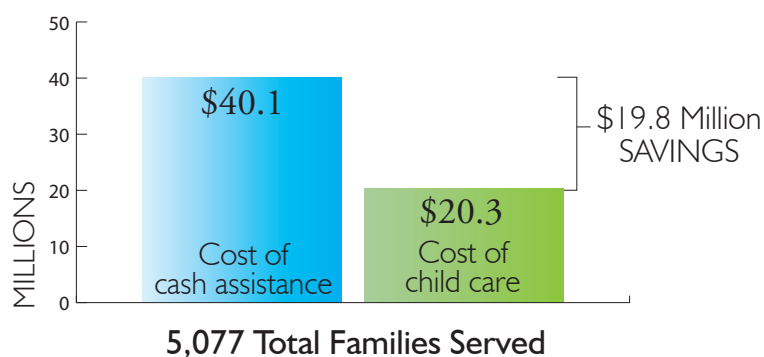
We contract with more than 300 local providers, infusing \$1 million a month into our small business community. For every \$1 invested in child care and Pre-K, more than **86 cents is spent in our communities** on personal living expenses and salaries.



(1) 2003 The Economic Impact of Child Care in Florida Report by Florida Children's Forum

SELF-SUFFICIENCY

Child care is the key to helping low-income parents get off public assistance and get jobs, creating an annual savings for Florida taxpayers of **\$3,900 per family**.



Of the families referred to the ELC that are on cash assistance, approximately 61 percent become employed within 30 to 60 days.

Of the families in Florida receiving child care or pre-K assistance, **89% receive NO OTHER form of assistance**.

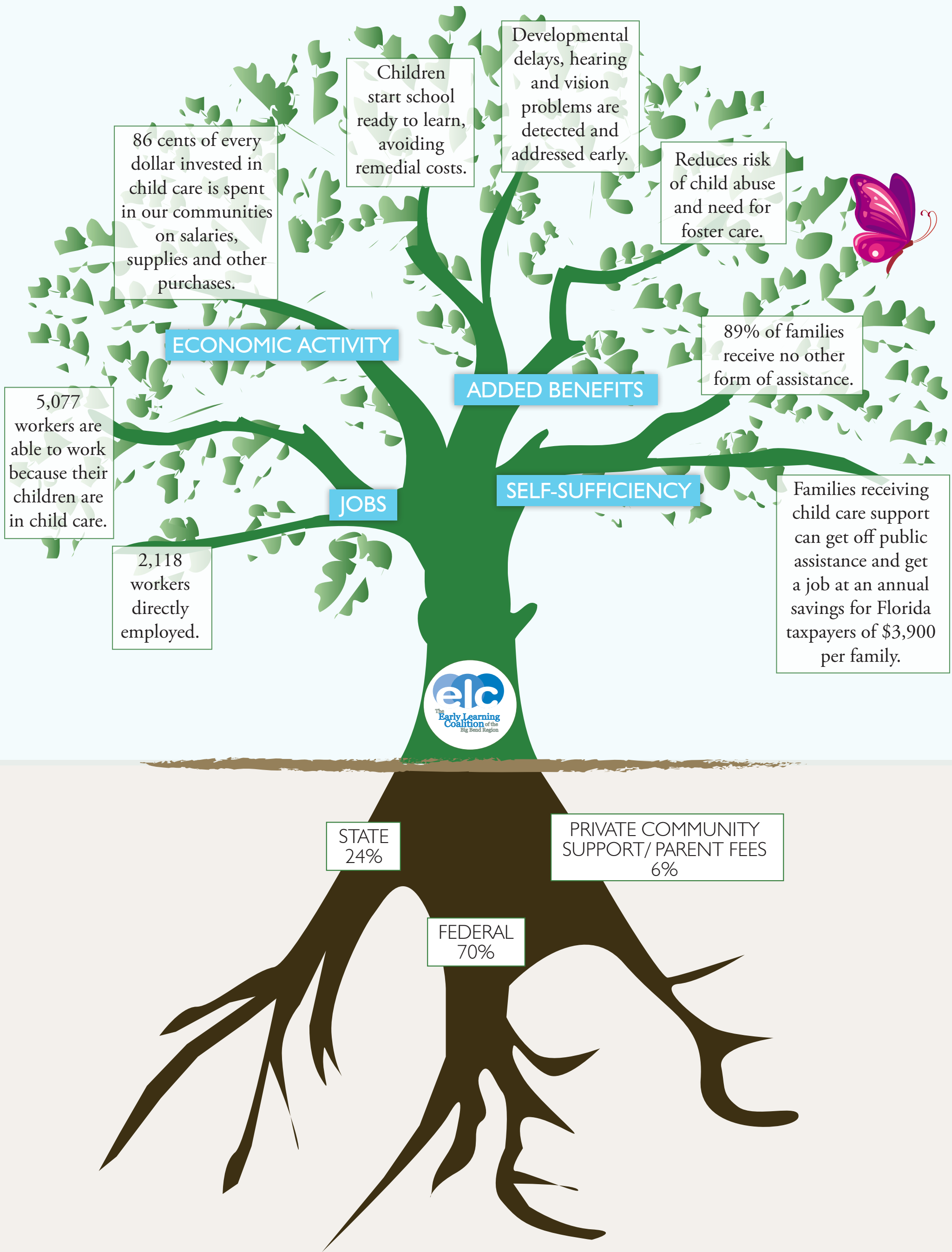
ADDED BENEFITS

Children who receive quality child care and pre-K services enter kindergarten ready to learn, **avoiding millions of dollars in remedial education**. Every \$1 invested in school readiness saves taxpayers \$8 in costs down the road.

Children served by the ELC are screened for developmental delays, hearing and vision problems. By catching and addressing problems early, they are more likely to **reach their full potential and succeed in school**.

By ensuring children are safe and reducing financial stresses by helping parents work, the investment in child care and pre-K **reduces the incidence of child abuse and the need to place children in foster care**.

Families Ready To Work, Children Ready To Learn



\$28 million annual investment in child care and pre-K.